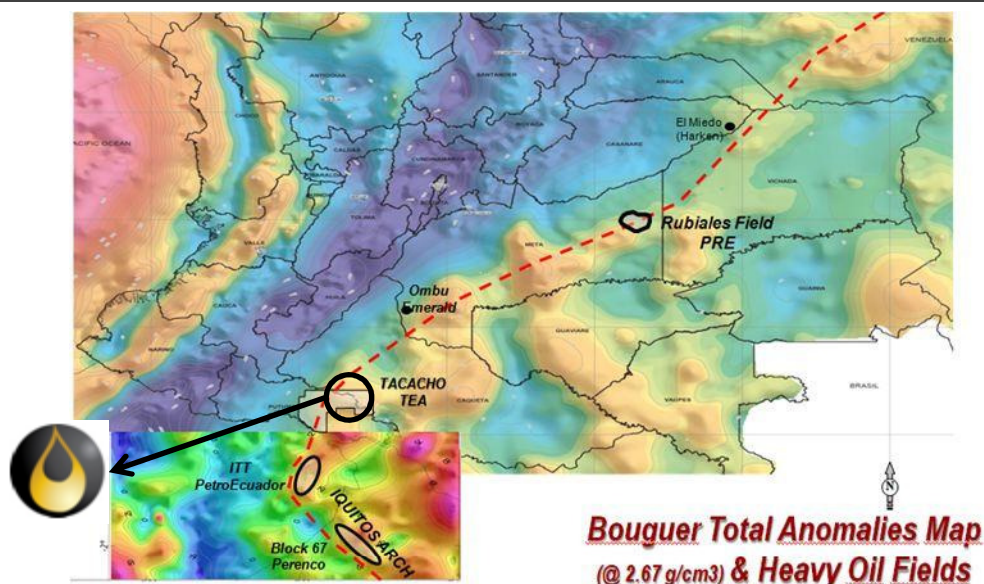
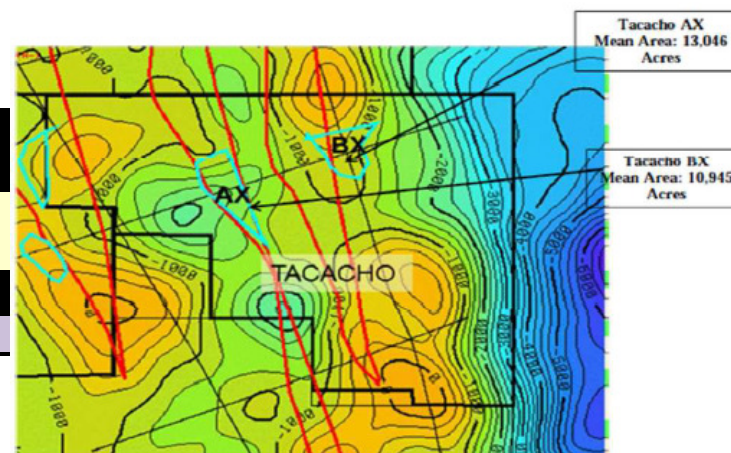


# Caguan-Putumayo Basin: Tacacho

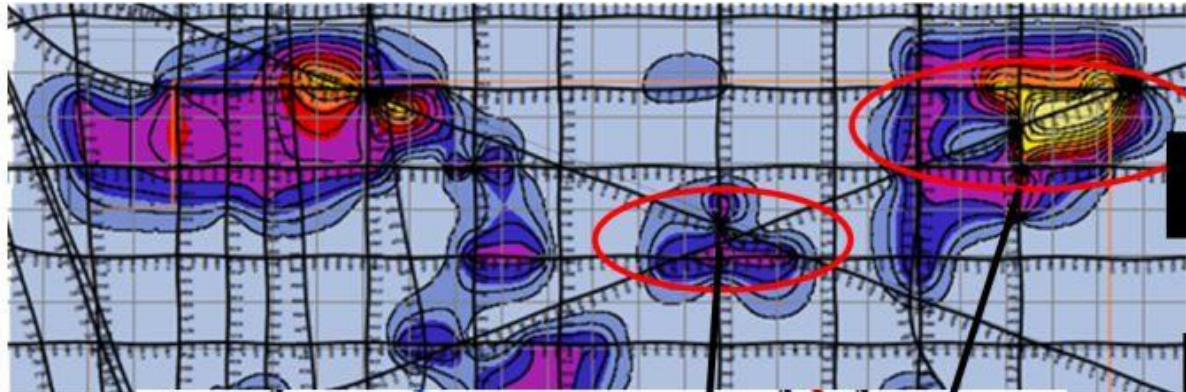
<b>Basin</b>	<b>Caguan-Putumayo</b>
<b>Contract Type</b>	ANH
<b>X-factor</b>	None
<b>Working Interest (PRE Operated)</b>	49.5%
<b>Work Commitment</b>	480 Km 2D



Petrotech June 2011			RESOURCE (mmbbl)			Prob of Success	Risked P50
Block	Leads	Name	P10	P50	P90		mmbbl
Tacacho		LEAD AX	218	71	25	15%	11
		LEAD BX	185	60	21	15%	9
Total Block			402	132	46	15%	20
Resource Estimated by: PetroTech June 2011							



# Caguan-Putumayo Basin: Tacacho Pinchout upside

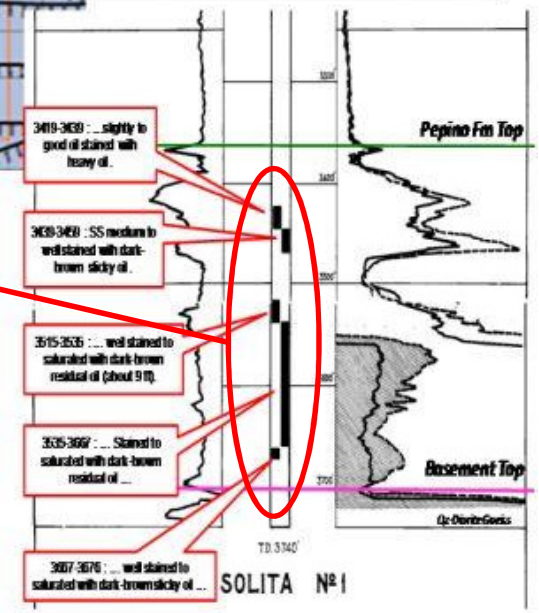
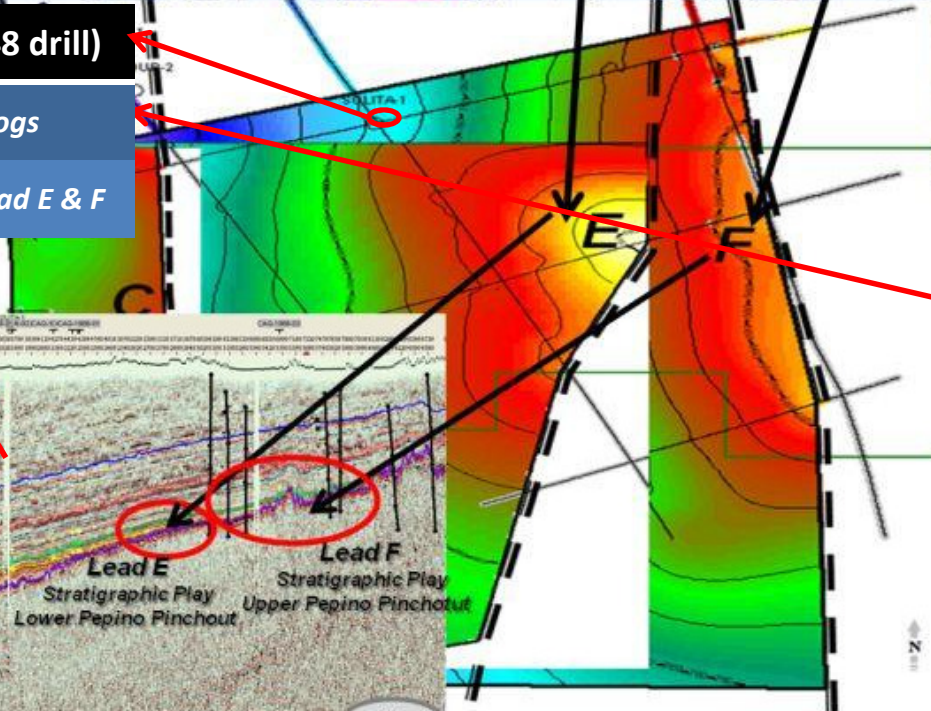


**Stress Field Detector**  
SFD from NXT

**Solita-1 Well Tie-in**

**Solita-1 well (Texaco 1948 drill)**

- Over 300 ft oil in core and logs
- Solita-1 is downdip from Lead E & F



**Seismic Tie-in**

